



Standard, Proven and Ruggedized for Your Transportable Shelter Needs

Gichner's NATO ACE Shelters provide optimum performance under the most demanding field conditions. Lightweight, high strength, insulated and all weather, this shelter satisfies general purpose applications for housing communications and other transportable electronic equipment. Rugged inside and outside, the NATO ACE Shelters are equipped to withstand adverse weather and terrain, in addition to a high level of interior traffic.

The NATO ACE Shelters are constructed of foam and beam sandwich panels which consist of a polyurethane foam core, aluminum skins and a framework of high strength aluminum alloy extrusions. Structural strength is assured by orientation of the floor and roof beams

in transverse direction. This "barrel hoop" construction provides the ability to withstand drop tests and high roof loads. Foam and beam panel



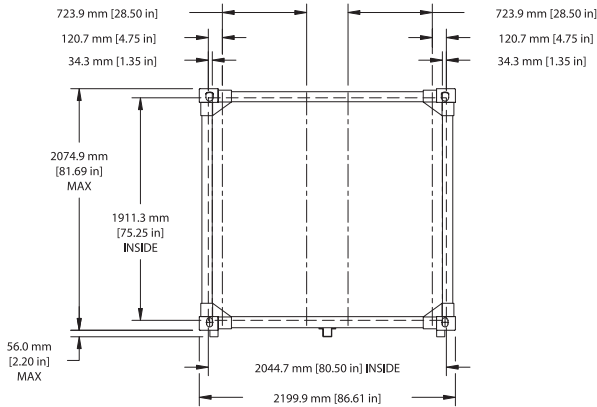
construction provides high strength to weight ratios and facilitates ease of modification, repair, and maintenance. Thick inner and outer floor skins (1.6 mm) lend added strength to withstand increased personnel or equipment traffic. Shelter ISO corners are reinforced to accept leveling jacks and to withstand side load imposed by high wind velocities.

Gichner's NATO ACE II and III shelters have been designed, analyzed, and tested

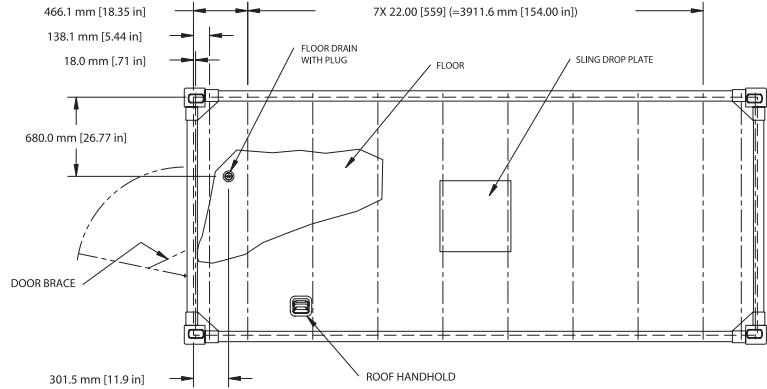
to Allied Command Europe's Standard Shelter Technical Specification 6516/SHCPR/88. As a result, these shelters are immediately available to all NATO countries. These shelters can be readily customized to accept your specific system by Gichner's extensive, experienced Engineering Design Staff.

Gichner's NATO ACE Shelters provide protection for your equipment/system, while being exposed to the most demanding man-made or natural environment, including transportation by land, sea or air.

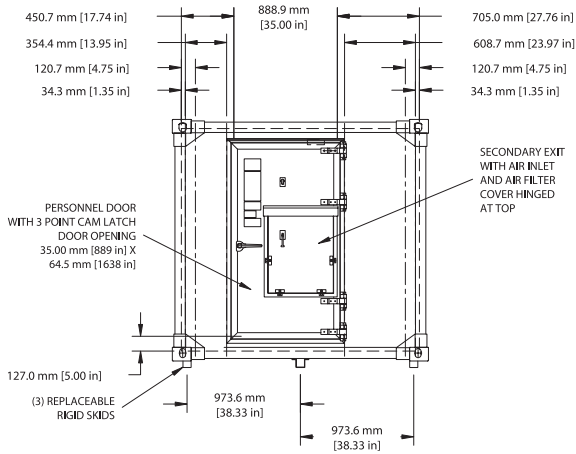
DIMENSIONS ARE TYPICAL
ROOF, FLOOR, AND BOTH SIDES



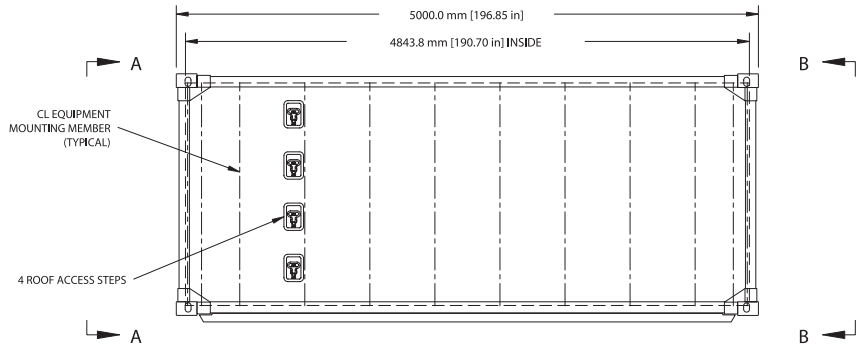
VIEW B-B



PLAN VIEW



VIEW A-A



SIDE VIEW

NATO ACE III

DRAWING NO.
7035670

MILLIMETERS (INCHES)

Performance Specifications:

Gichner's NATO ACE II & III Shelters meet or exceed the performance requirements of Allied Command Europe's Standard Shelter Specification 6516/SHCPR/88.

| Shelter Type | Exterior Dimensions (mm) | | | Interior Dimensions (mm) | | | Weight (Kg) | Payload (Kg) | Outline Dwg. |
|--------------|--------------------------|------|------|--------------------------|--------|--------|-------------|--------------|--------------|
| | H | W | L | H | W | L | | | |
| ACE II | 2075 | 2200 | 4256 | 1911 | 2044.7 | 4093.7 | 900 | 3600 | 7035687 |
| ACE III | 2075 | 2200 | 5000 | 1911 | 2044.7 | 4844 | 1200 | 4300 | 7035670 |