



# S-280C/G



## Standard, Proven and Ruggedized for Your Transportable Shelter Needs

The S-280C/G shelter provides optimum performance under the most demanding field conditions. Lightweight, high strength, insulated and all weather, this shelter satisfies general-purpose applications for housing communications and other transportable electronic equipment. Rugged inside and outside, the S-280C/G is equipped to withstand adverse weather and terrain, in addition to a high level of interior traffic.

The S-280C/G shelter is constructed of foam and beam sandwich panels, which consist of a polyurethane foam core, aluminum skins and a framework of high strength aluminum alloy extrusions. Structural strength is assured by orientation of the floor and roof beams in transverse direction. This “barrel hoop” construction provides the ability to withstand drop tests and high roof loads. Foam and beam panel construction provides high strength to weight ratios and facilitates ease of modification, repair, and maintenance.

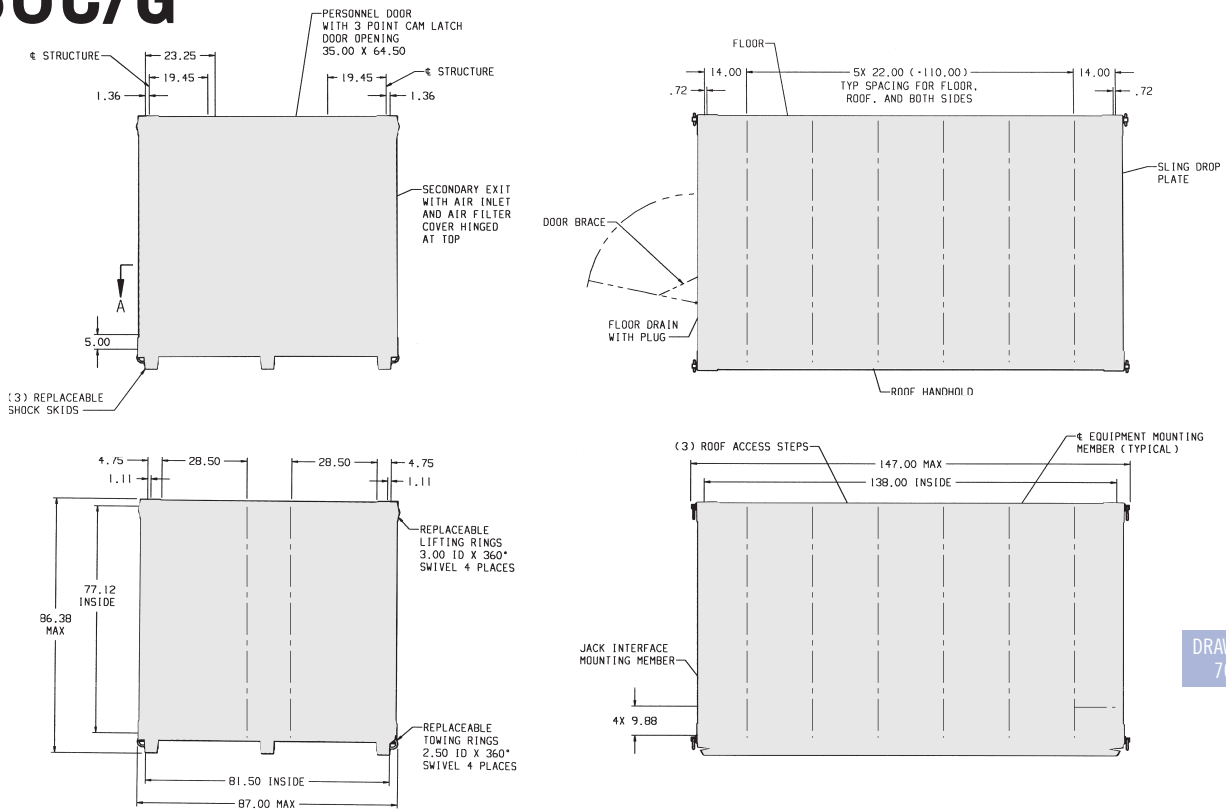
Thick inner and outer floor skins (0.050 in.) lend added strength to withstand increased personnel or equipment traffic. Shelter corners are reinforced to accept leveling jacks and to withstand side load imposed by high wind velocities.

The original S-280B/G shelter was reviewed under the U.S. Army Product Improvement Program. As a result of this review and the DoD standardization of shelter programs, the current S-280C/G was developed and reflects valuable construction changes and nomenclature model re-designation. The result is an improved, tested, standard shelter. The S-280 can be transported via military truck, helicopter, cargo aircraft such as the C-130, M720 and M832 mobilizers, and by rail and ship.



**A TRADITION OF QUALITY**

# S-280C/G



DRAWING NO.  
7004625

Model No.	Description	Exterior Dimensions (in)			Interior Dimensions (in)			Shelter Weight	Payload (Lbs.)	Outline Dwg.
		H	W	L	H	W	L			
S-280C/G	Industry Std.	86-3/8	87	147	77-1/8	81-1/2	138	1400	7100	7004625
S-280C-80	80" High S-280C	89-1/4	87	147	80	81-1/2	138	1600	7100	7006828

## Performance Specifications:

**Specification ASTM E 1975 (MIL-S-55286E)**

**Roof Load:** Snow and ice 75 lbs./sq. ft., Personnel and equipment 660 lbs. over a 2 sq. ft. area.

**Floor Load:** 2,500 lbs. over 3 sq. ft. area without permanent deformation.

**Member Loading:** Wall, roof, and floor tensile load 2,000 lbs. followed by 100 inch-pounds torque load (5/16" - 18 inserts).

### Temperature Extremes:

Operating: -65°F to +125°F plus solar load.  
Non-Operating: -80°F to +160°F.

**Heat Transfer:** U-factor 0.28 BTU/hr./sq. ft./°F.

**RFI Shielding:** With addition of RFI modification kit, attenuation of 60 dB minimum over 150 KHz to 10 GHz for electric and magnetic fields and plane waves measure IAW MIL-STD-285.

**Watertightness:** Tested to 21 inch fording depth and to simulated rainfall.

**Lifting Eyes:** Four (4) eyes with 3 in. inside clearance. 14,400 lbs. tensile load per corner in any direction.

**Towing Eyes:** Four (4) eyes with 2 in. inside clearance. 14,400 lbs. tensile load per corner in any direction.

## Features:

- Skids: Three (3) full length replaceable shock absorbing type
- Roof Access Steps: Three (3) recessed folding steps in sidewall and one roof handhold
- Combination lifting/tie down sling to facilitate handling

## Options:

- RFI Modification Kit
- Mobilizer adapter kit for shelter/ transporter interface



Dallastown, Pennsylvania USA  
PH: 888 378 5570  
FX: 717 246 5496  
solutions@gichner.com  
www.gichner.us