



The Largest HMMWV Shelter Available for Your Mobile Applications

The S-710 shelter is a Gichner design incorporating the latest in lightweight, high strength structural engineering. This insulated, all-weather, mobile unit offers remarkable next generation features, and endures the toughest field conditions.

Bonded sandwich construction consists of a polyurethane foam core, aluminum skins, and a framework of high strength welded and riveted aluminum alloy

extrusions. Construction materials and processes are identical to the S-280 (C)/G per MIL-S-55286E. Foam and beam panel construction provides high strength

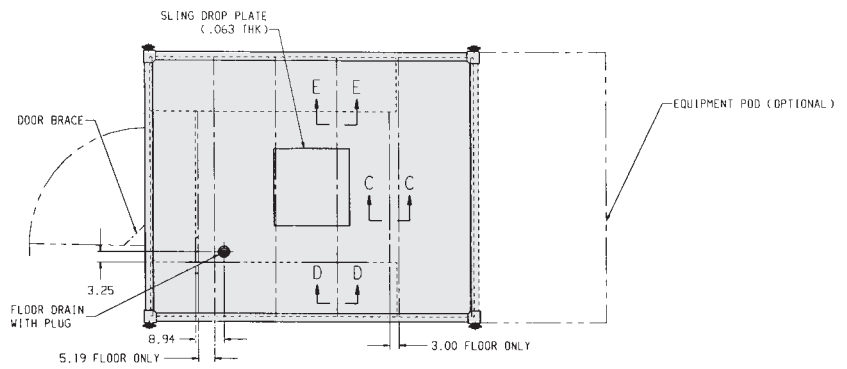
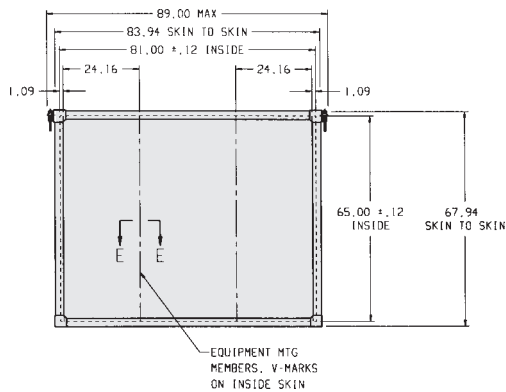


to weight ratios and facilitates ease of modification, repair and maintenance.

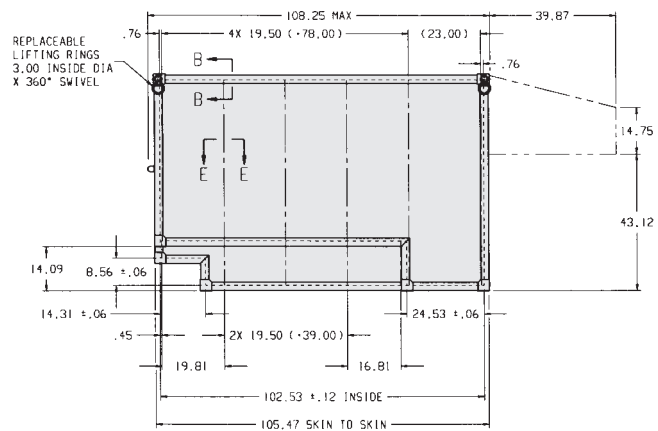
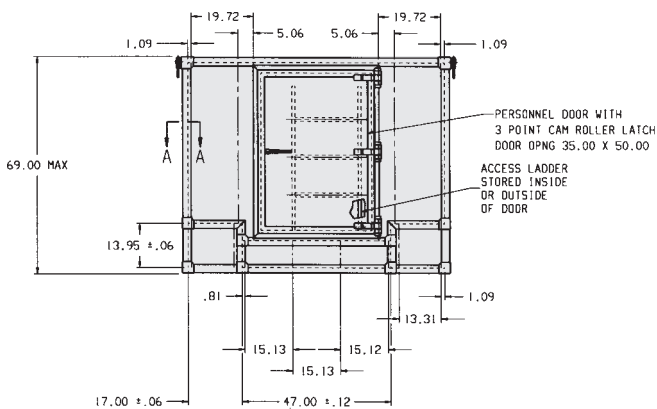
Developed specifically for the new generation HMMWV, the S-710 offers the largest interior volume of the HMMWV shelters. Exterior dimensions permit the vehicle mounted shelter to be driven onto military cargo aircraft such as the C-130. Bolt-on adapter kits allow the S-710 to be attached to a HMMWV or CUCV truck without tie-down slings.

A Tradition of Quality

S-710



DRAWING NO.
7036462s



Performance Specifications:

Designed to meet the shelter performance specification defined in MIL-PRF-44408.

Weight: 680 lbs.

Payload: 3,300 lbs.

Roof Load: Snow & ice 40 lbs./sq. ft. Personnel and equipment 660 lbs. over a 2 sq. ft. area.

Floor Load: 1,000 lbs. over 3 sq. ft. area without permanent deformation.

Member Loading: Wall, roof, and floor tensile load 1,000 lbs. followed by 100 inch-pounds torque load 5/16" - 18 UNC inserts.

Temperature Extremes:

Operating: -65°F to +125°F plus solar load.
Non-Operating: -80°F to +160°F.

Heat Transfer: U-factor -0.40 BTU/hr./sq. ft./°F.

RFI Shielding: With addition of RFI modification kit, attenuation of 60 dB minimum over 150 KHz to 10 GHz for electric and magnetic fields and plane waves measure IAW MIL-STD-285.

Watertightness: Tested to 30 inch fording depth and to simulated rainfall.

Lifting Eyes: Four (4) eyes with 3 in. inside clearance. 5,000 lbs. tensile load per corner in any direction.

Features:

- Roof Access Steps: Two (2) recessed folding steps in sidewall and one roof handhold
- Access Ladder: Standard ladder with external mounting bracket
- HMMWV Mounting Kit

Options:

- Roof Mounted Escape Hatch
- Over-cab Equipment Pod